

# Expanding the Scope of Tourism For Protected Areas



Raquel Thomas-Caesar , PhD

Iwokrama International Centre For Rain Forest Conservation and Development

Reforsap Workshop on Tourism

Akira Resort, Suriname

November 21, 2019

# Background on Guyana

- Population - 770,000
- Land Area - 21.6 Million Ha
- Total Forest - 18 Million Ha
- Forested Area- 87%
- Ethnically- Ancestry
  - *East Indian, African, Amerindian, Chinese, European including Portuguese*
- 9 Amerindian Nations
  - *Wapishana*
  - *Macushi*
  - *Wai Wai*
  - *Carib*
  - *Arawak*
  - *Patamona*
  - *Warrau*
  - *Arecuna*
  - *Akawaio*
- Agriculture, Mining, Forestry, Fisheries, Oil (new)
- Number of tourists 2018- 247,000 (3<sup>rd</sup> sector after gold and rice)



# Background

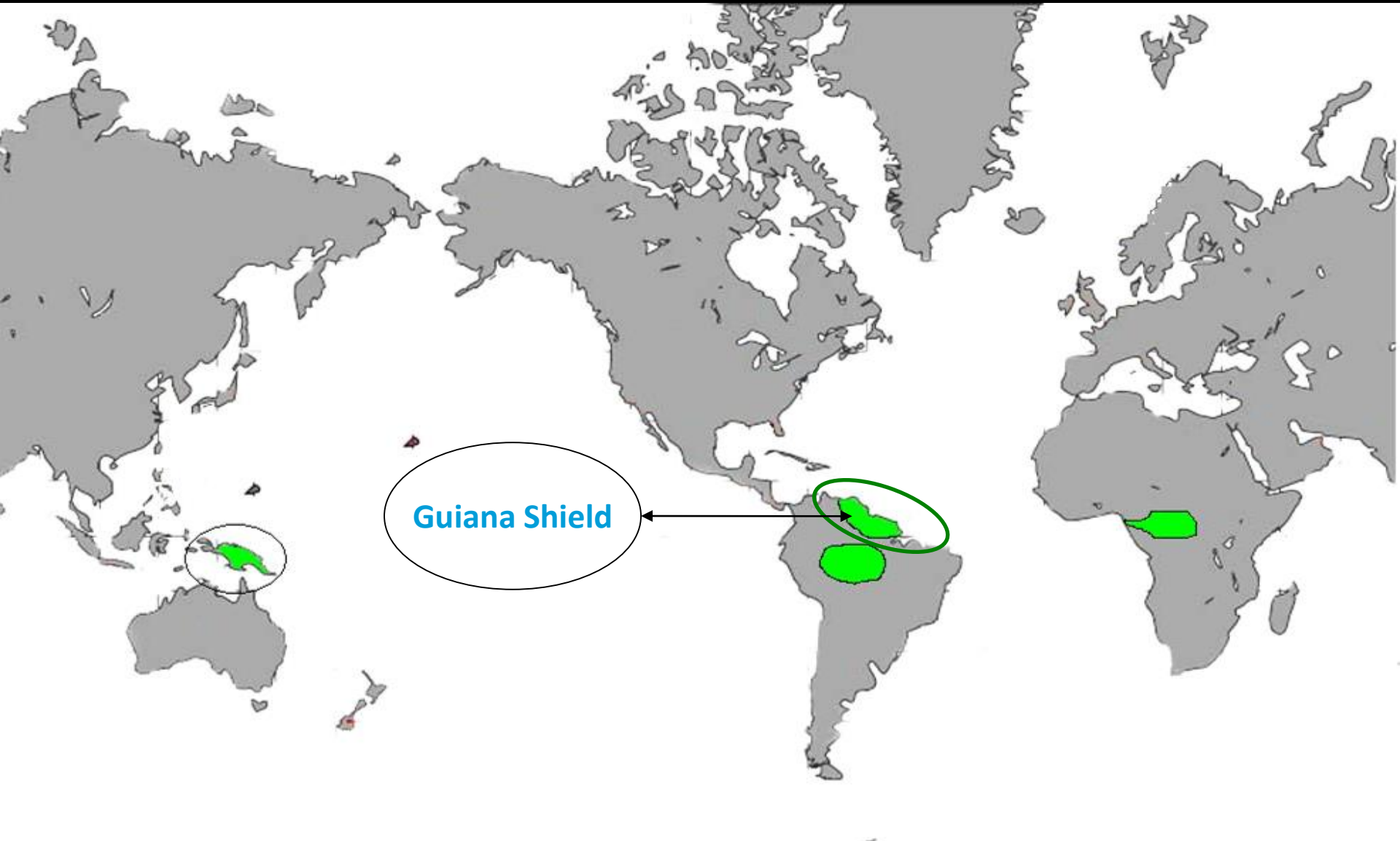
## Suriname

- Population- approx. 500,000
- Forest cover- 90 %
- Economic- gold, oil, bauxite, forestry, fisheries, rice
- 3 Amerindian Nations
- 6 Maroon Nations
- Annual tourist no- 260,000

## French Guiana

- Population – 280,000
- Forest cover- 84%
- Economic- gold, space centre services, public service
- 6 Amerindian Nations
- 4 Maroon Nations
- Annual tourist no- 120,000

# Positioning the Three Guianas Guiana Shield/Amazon?





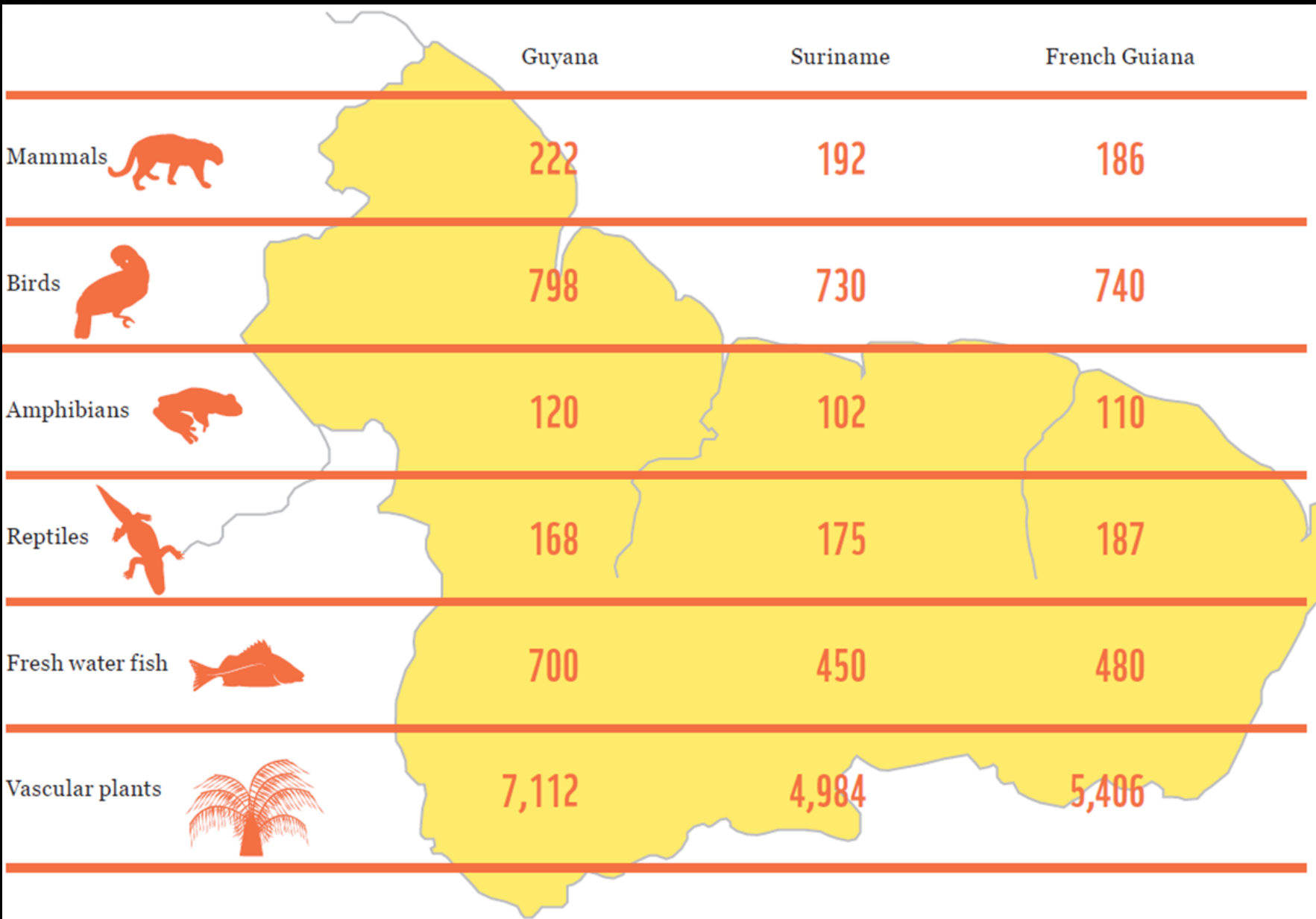


Rank	Country	Oldest (year)
1	Brazil	1937
2	Colombia	1960
3	Venezuela	1937
4	Chile	1926
5	Argentina	1934
6	Bolivia	1939
7	Paraguay	1966
8	Ecuador	1959
9	Peru	1961
10	Uruguay	1916
11	Guyana	1929

Any tourism related to protected areas  
MUST BE  
Conservation Focused

# Biodiversity





**Five Star Forest  
Suriname**





- Shell Beach Protected Area- Guyana
- Amana Nature Reserve- Fr Guyane
- Galibi Protected Area/Braaampunt- Suriname
- Mangrove forests/ Marine turtles(four species)









# Potential for birding tourism enormous









# Sport Fishing



Scenic beauty





# Kaieteur National Park







Kaburi Creek- Suriname



# Kanuku Mountains- Protected Area





# French Guiana - Abattis Cottica





# Cultural Heritage







# Boni Traditional House-Fr Guiana







the  
**Amazon Conservation Team**  
*Suriname*

# FOSTEN

A STORY ABOUT  
**TRADITION & TERRITORY**













Food (Culinary)











# Agriculture Tourism







Educational















Research/Science





Operation Wallacea Expeditions- Annual  
research expeditions to Iwokrama since 2011-  
Faunal Surveys  
<http://opwall.com/>





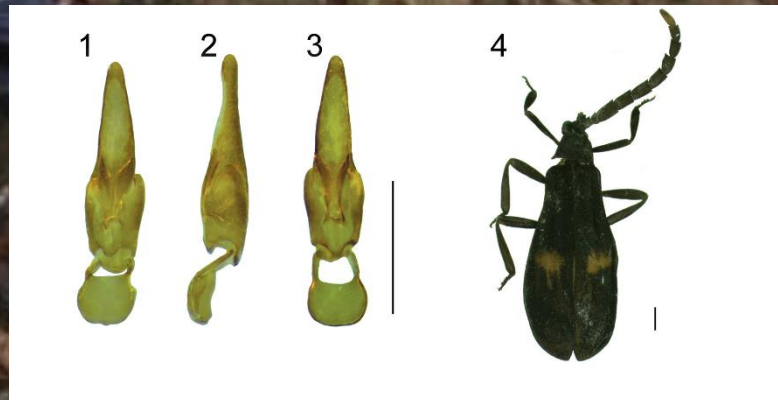




Do not try this at home, you have to be specially trained to do this



Seven new species to science  
discovered over the past 10 years  
in the Iwokrama Forest





# Caiman House



Ronald Nandlall

Ronald Nandlall

Email: [info@rupununilearners.org](mailto:info@rupununilearners.org)



# Rehabilitation



# Karanambu Ranch-Rupununi









Recreational



# Rock View Lodge- Annai, Rupununi







Orinduik Falls- North Pakaraimas



Adventure





Iwokrama Canopy Walkway



Hiking Tours offer new opportunities



















Turu Falls, Iwokrama



Photography/Film

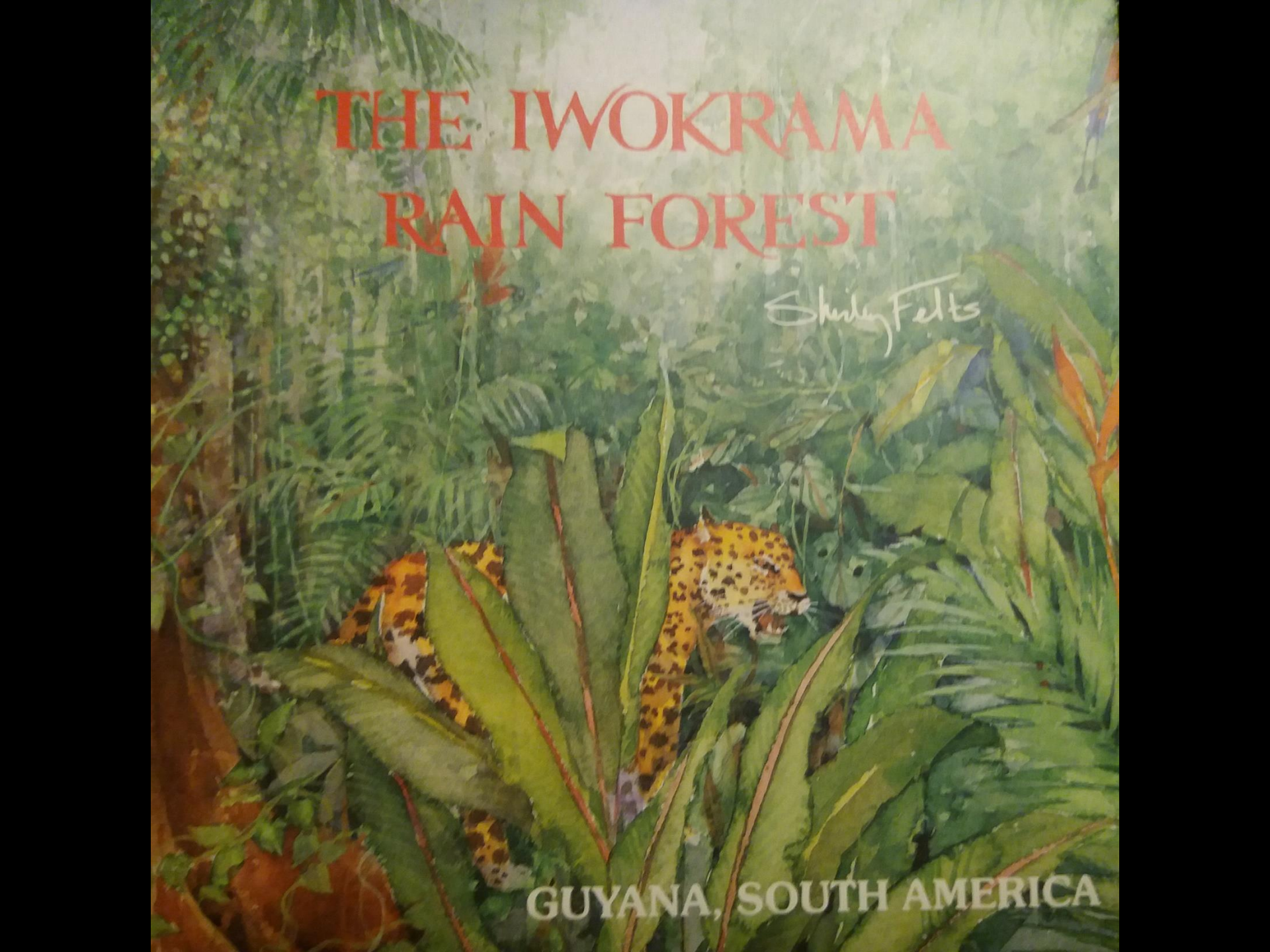






Art





# THE IWOKRAMA RAIN FOREST

*Shirley Felts*

GUYANA, SOUTH AMERICA







# Community Tourism



# Community Owned Protected Area

- 625, 000 hectares- Kanashen
- Wai Wai Tribal Nation





# Surama Village Community Tourism

[www.suramaecolodge.com](http://www.suramaecolodge.com)





# Rewa Village Community Tourism

## Rewa Eco Lodge

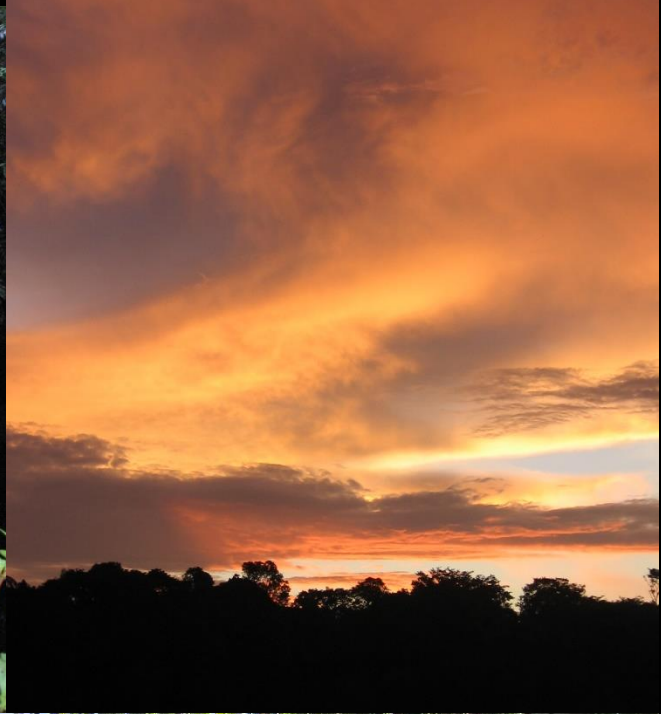
*Welcome to an Adventure in Wilderness & Spirit...*





# Health and Wellness







# Conservation with Money

Is really just a conversation





IT CANNOT be done without  
collaboration







Iwokrama



@Iwokramatourism



@IwokramaGuyana



@IwokramaInternationalCentre



Tourism@iwokrama.org



#GreenHeart



## Contact

**Dr Raquel Thomas**

[rthomas@iwokrama.org](mailto:rthomas@iwokrama.org)

Whatsapp: +5926748669

[www.iwokrama.org](http://www.iwokrama.org)

[www.iwokramariverlodge.com](http://www.iwokramariverlodge.com)

[www.iwokramacanopywalkway.com](http://www.iwokramacanopywalkway.com)

## Photo Credits

- Raquel Thomas
- Ricardo Stanoss
- Pete Oxford
- Samantha James
- Graham Watkins
- Thomas Horsely
- FotoNatura
- Phillipe Kok
- Michel Aloike
- Katia Delvoye
- PAG
- Hans ter Steege

