

# Monitoring of the Parc amazonien de Guyane's territory

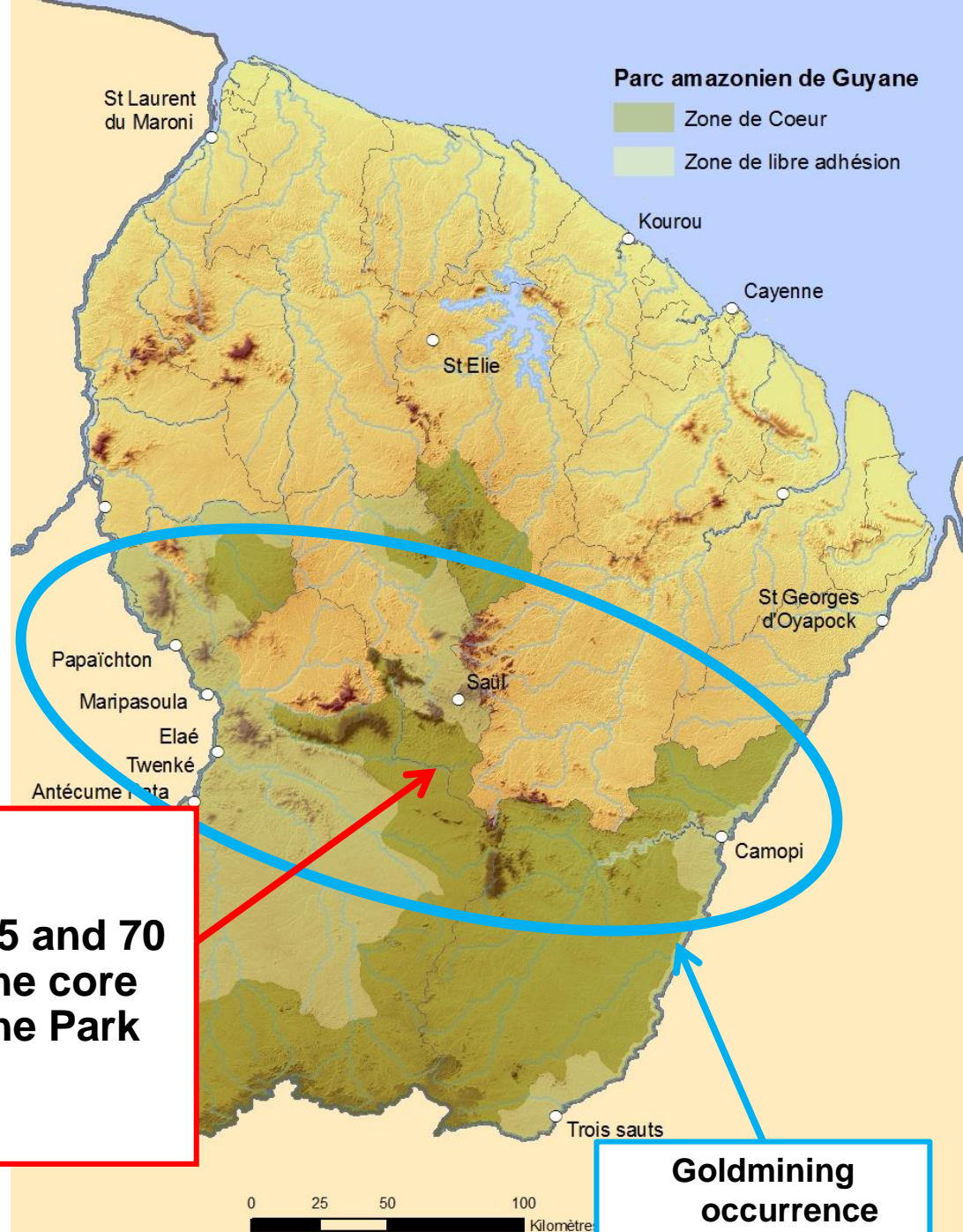
## Overview of the current situation of illegal goldmining RENFORESAP Workshop 12/02/20



**Tadeu (Maripa-Soula) : Core zone of the PAG (21/09/2019)**

# Illegal goldmining in the PAG

- 100 illegal sites at its set up 2008
- 145 sites in September 2019



**Between 45 and 70 sites in the core zone of the Park**

**Goldmining occurrence**



**Illegal goldmining in French Guiana has increased again by the end of the 90s with the rise in the price of gold (4.5 times)**



## 2 techniques for gold extraction :

- Alluvial sites
- Primary sites

## Alluvial site

2

1

3

The goldminers:

- pump water from the creek with a motopump (1)
- this is propelled by spears (2) to create mud
- which is sent to a lift table (3) to recover the gold

## Consequences :



- Trees cut down, stripped soil, destroyed riverbed, turbid water
- Mercury in the food chain
- Pollution (fuel, waste)

## Primary Site

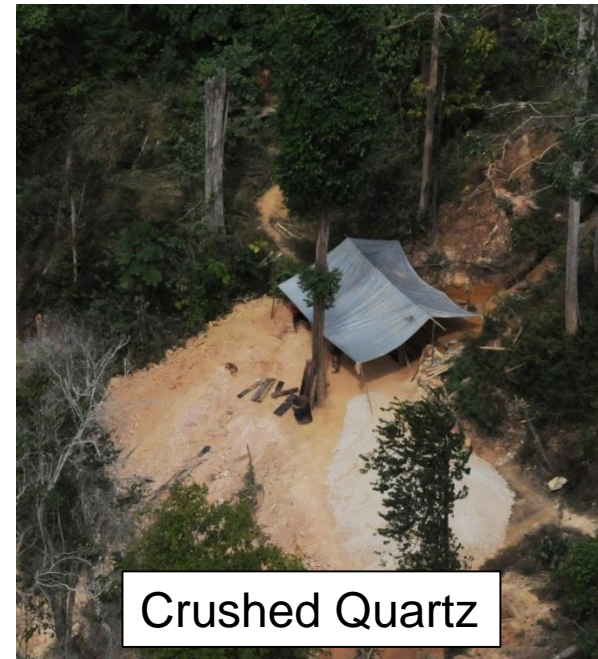


The goldminers dig wells and galleries in search of gold in quartz veins

## Primary Site



Wells



Crushed Quartz

## Consequences :

- The wells leave many holes which constitute potential traps
- Profitable activity which concentrates very large populations of goldminers
- Overall, less impact than alluvial sites

## Other impacts

- Destruction of the way of life of the local populations who live in connection with nature (watercourse, forest) :
  - Mercury pollution of fish (pregnant women)
  - Loss of their peaceful life : theft (abattis, boats), competition for hunting
  - Alcohol, prostitution







**Awarasoula (Maripasoula)** : next to the village of Twenke / Taluen (25/01/20)



**Massif Emérillon (Camopi)** : progression of a site (right to left) which is destroying gradually the creek (20/09/19)



**Eau Claire (Maripasoula)** : a hill terraced in the core zone of the Park (29/01/20)

**Confluence Inipi – Camopi : same observation 20 months apart**

19/01/18



20/09/19



*Boat logistics*

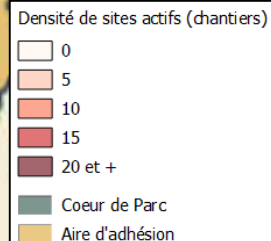
## Illegal goldmining in and around the Park in September 2019

**PAPAICHTON** : 32 active sites.  
Intense activity in Petit Abounami.  
Exceptional turbidity

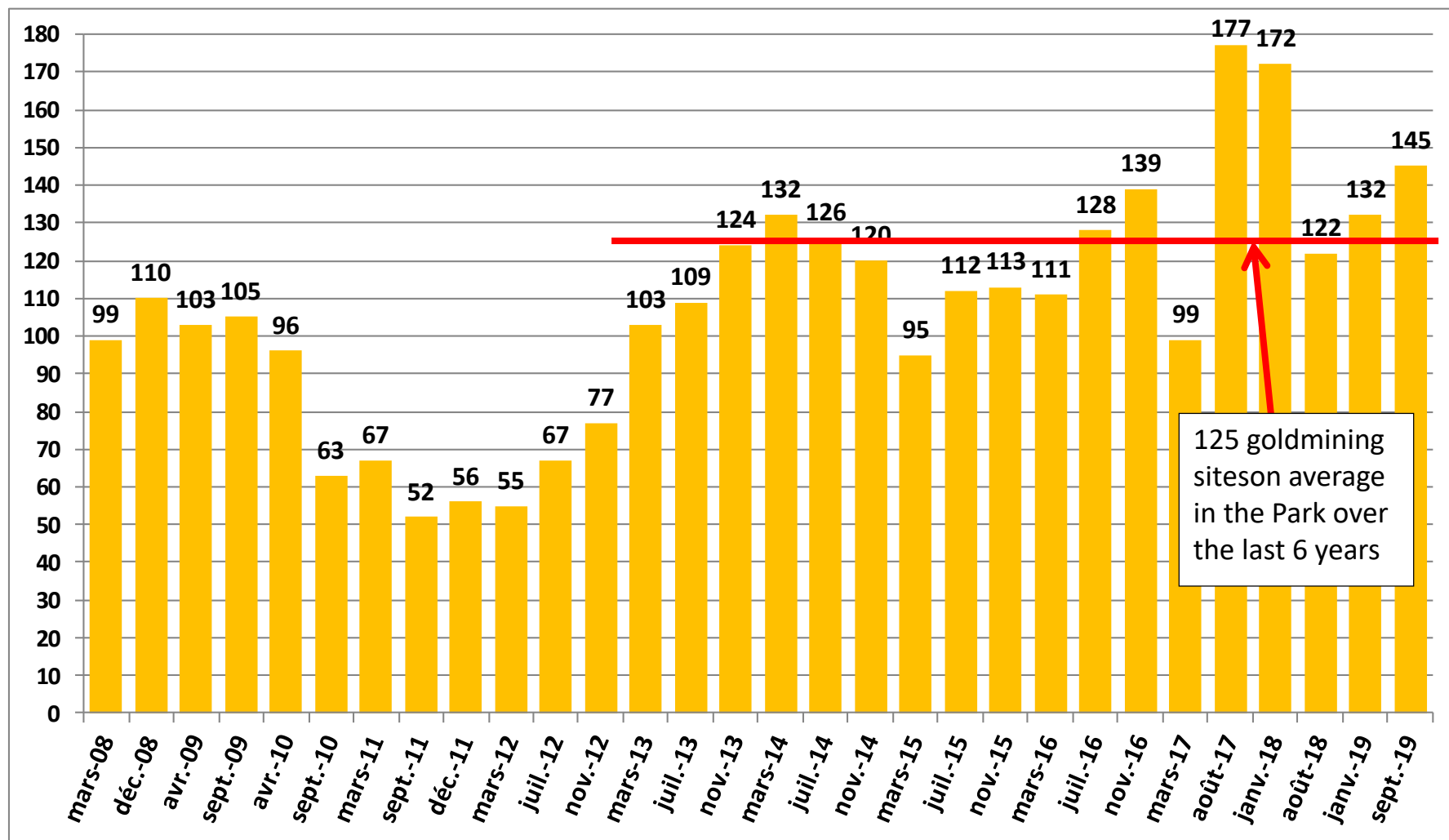
**SAUL** : 5 active sites to the north  
Unique sector recovered from the goldminers  
(radius of 15 kms from the town centre)

**CAMOPI** : 33 sites in the core zone  
Difficult to surprise the goldminers  
scattered over the large territory

**MARIPA-SOULA** : 75 active sites  
Challenges over the inhabited areas and the  
core zone  
Intense logistics from Suriname



Commune	2014	2015			2016			2017		2018		2019	
	Nov	Mars	Juil	Nov	Mars	Juil	Nov	Mars	Août	Janv	Août	Janv	Sept
<i>Sous-total Camopi</i>	19	24	26	22	25	32	26	24	35	34	24	28	33
<i>Sous-total Saül</i>	13	11	18	8	8	10	8	2	8	6	6	6	5
<i>Sous-total Papaïchton</i>	42	30	22	31	31	25	14	20	20	18	25	26	32
<i>Sous-total Maripasoula</i>	46	30	46	52	47	61	91	53	114	114	67	72	75
<b>TOTAL</b>	<b>120</b>	<b>95</b>	<b>112</b>	<b>113</b>	<b>111</b>	<b>128</b>	<b>139</b>	<b>99</b>	<b>177</b>	<b>172</b>	<b>122</b>	<b>132</b>	<b>145</b>





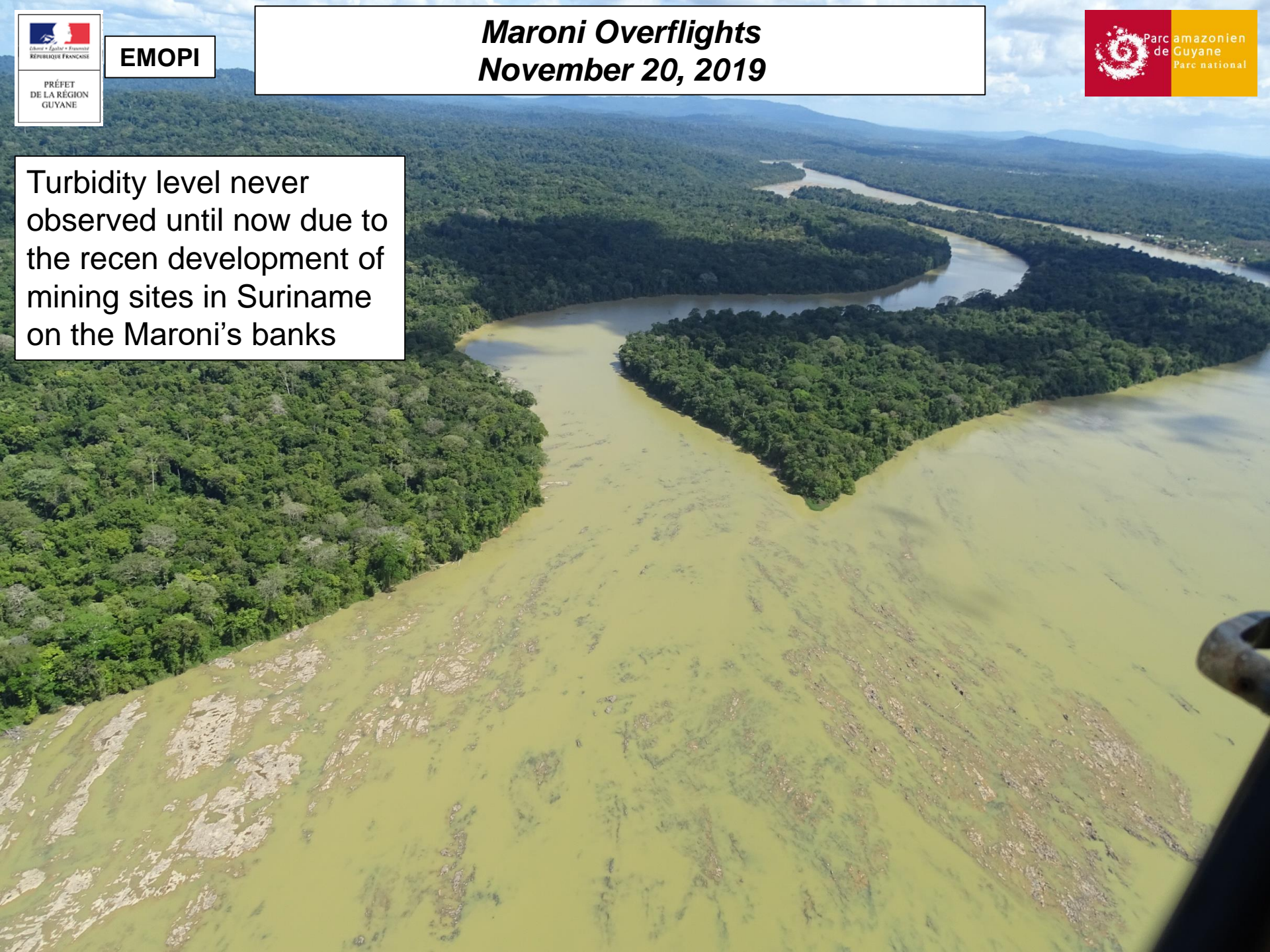
PRÉFET  
DE LA RÉGION  
GUYANE

EMOPI

## *Maroni Overflights November 20, 2019*



Turbidity level never observed until now due to the recent development of mining sites in Suriname on the Maroni's banks



# ***Exploitation of the banks in Suriname and activity of the barges***





